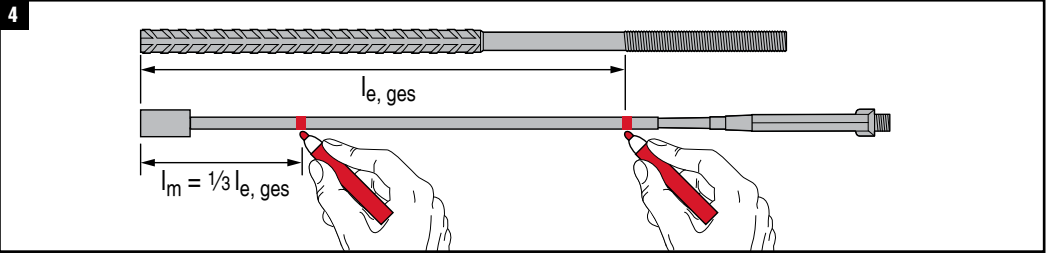


3.1

	HIT-SZ	HIT-VL	HIT-RB
HZA (-R) M 12	HIT-SZ 16	HIT-VL 9/1.0	HIT-RB 16
HZA (-R) M 16	HIT-SZ 20	HIT-VL 16/0.7	HIT-RB 20
HZA (-R) M 20	HIT-SZ 25	HIT-VL 16/0.7	HIT-RB 25
HZA (-R) M 24	HIT-SZ 32	HIT-VL 16/0.7	HIT-RB 32
HZA M 27	HIT-SZ 35	HIT-VL 16/0.7	HIT-RB 35
HZA M 30	HIT-SZ 40	HIT-VL 16/0.7	HIT-RB 40
HZA M 39	HIT-SZ 55	HIT-VL 16/0.7	HIT-RB 55

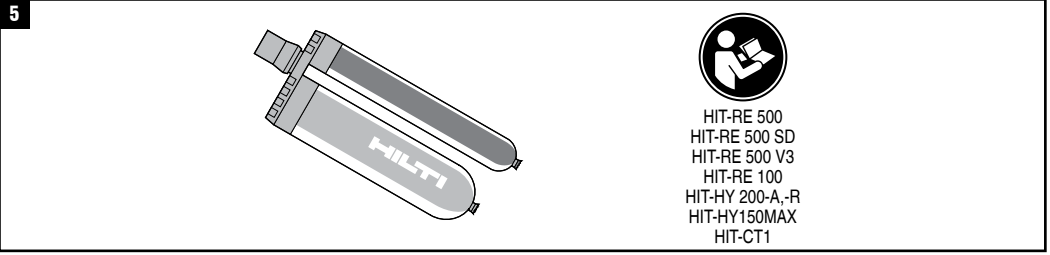
1.1

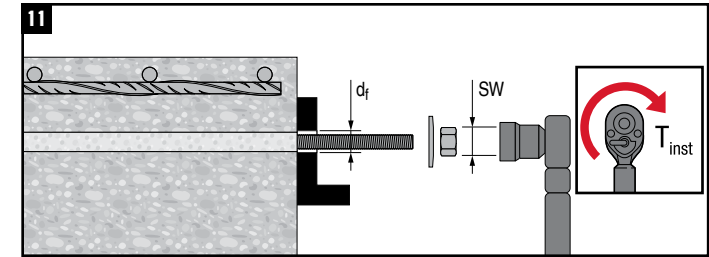
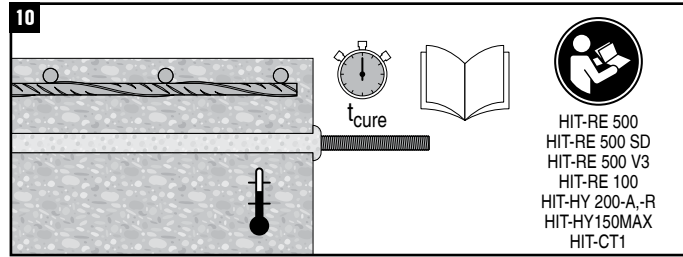
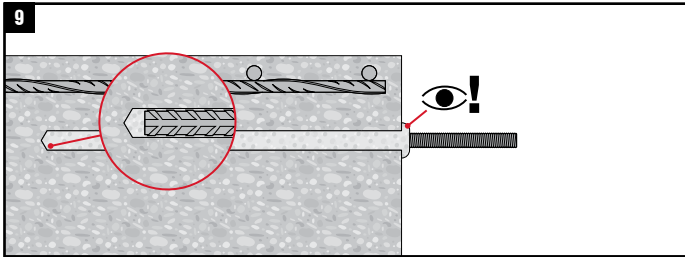
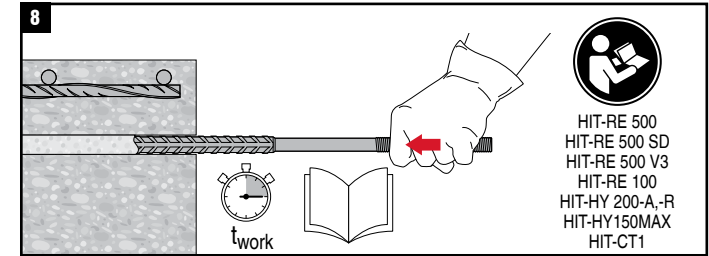
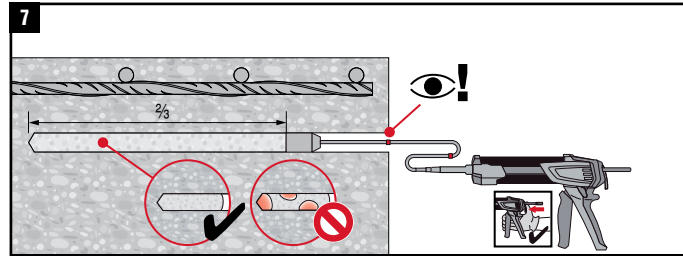
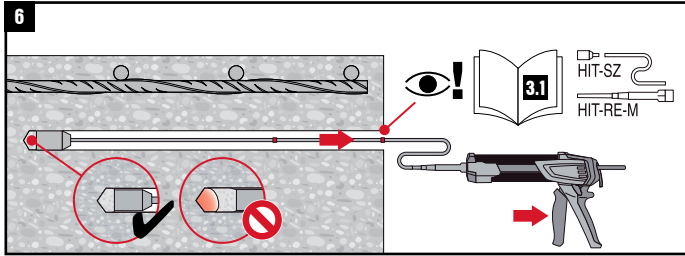
d_s	d_o	h_1
HZA (-R) M 12	Ø 16 mm	$l_{e, ges}$
HZA (-R) M 16	Ø 20 mm	$l_{e, ges}$
HZA (-R) M 20	Ø 25 mm	$l_{e, ges}$
HZA (-R) M 24	Ø 32 mm	$l_{e, ges}$
HZA M 27	Ø 35 mm	$l_{e, ges}$
HZA M 30	Ø 40 mm	$l_{e, ges}$
HZA M 39	Ø 55 mm	$l_{e, ges}$



1.2

	d_s max.		
HIT-HY 150 MAX	HZA(-R) M12 ... M27	✓	✗
HIT-RE 500	HZA(-R) M12 ... M39	✓	✓
HIT-RE 500-SD	HZA(-R) M12 ... M30	✓	✗
HIT-HY 200-A/-R	HZA(-R) M12 ... M30	✓	✗
HIT-CT 1	HZA(-R) M12 ... M24	✓	✗
HIT-RE 500 V3	HZA(-R) M12 ... M24	✓	✓
HIT-RE 100	HZA-R M12 ... M24	✓	✗





Product	1	2	3	4	mm	M12	M16	M20	M24	M27	M30	M39
						HZA-R	HZA-R	HZA-R	HZA-R	HZA	HZA	HZA
HIT-RE 500	04	0045	04/0027	7	h_{ef}	70-140	80-220	90-300	100-400			
					l_e	100	100	100	100			
HIT-RE 500-SD	07	0206	07/0260	1	h_{ef}	70-140	80-220	90-300	100-400			
	09	0233	09/0295		l_e	100	100	100	100			
HIT-HY 150 MAX	08	0237	08/0202		h_{ef}	<800	<1300	<1300	<1300			
	08	240	08/0352	1	l_e	≥ 100	≥ 100	≥ 100	≥ 100			

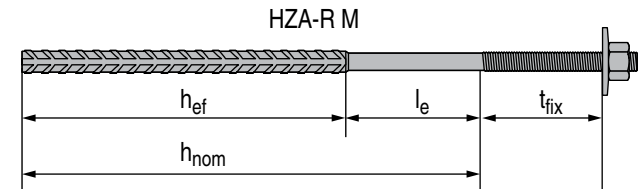
CE

0756

Hilti AG
FL-9494 Schaan
Hilti Werke

0756-CPD

ETA-
ETAG 001-1, 5 Option



Product	d_s	d_f	SW	T_{inst}
HZA (-R) M 12		Ø 14 mm	19	0 ... 40 Nm
HZA (-R) M 16		Ø 18 mm	24	0 ... 80 Nm
HZA (-R) M 20		Ø 22 mm	30	0 ... 150 Nm
HZA (-R) M 24		Ø 26 mm	36	0 ... 200 Nm
HZA M 27		Ø 30 mm	41	0 ... 270 Nm
HZA M 30		Ø 33 mm	46	0 ... 300 Nm
HZA M 39		Ø 42 mm	60	0 ... 390 Nm

Product	1	2	3	4	5	mm	M12		M16		M20		M24		M27	M30	M39
							HZA	HZA-R	HZA	HZA-R	HZA	HZA-R	HZA	HZA-R	HZA	HZA	HZA
HIT-RE 500	14	-4/07.14	08/0105	ETAG 001,-5		h_{ef}		<800		<1300		<1300		<1300			
						l_e		≥ 100		≥ 100		≥ 100		≥ 100			
HIT-HY 200-A	15	-10/07.14	11/0493	ETAG 001,-5	1	C1	h_{ef}	70-220	70-140	80-300	80-220	90-380	90-300	100-480	100-400	120-540	
	14	-5/07.14	11/0492	ETAG 001,-5			h_{ef}		<800		<1300		<1300		<1300		
HIT-HY 200-R	15	-11/07.14	12/0084	ETAG 001,-5	1	C1	h_{ef}	70-220	70-140	80-300	80-220	90-380	90-300	100-480	100-400	120-540	
	15	-6/07.14	12/0083	ETAG 001,-5			h_{ef}		<800		<1300		<1300		<1300		
HIT-RE 100	16	-20/07.14	15/0882	ETAG 001,-5			h_{ef}	70-140		80-220		90-300		100-400			
							l_e	100		100		100		100			
HIT-RE 500 V3	16	-23/07.14	16/0143	ETAG 001,-5	1	C1	h_{ef}	70-220	70-140	80-300	80-220	90-380	90-300	100-480	100-400	120-540	
	16	-22/07.14	16/0142	EAD 330087-00-0601			h_{ef}	70-780	70-700	80-1280	80-1200	90-1280	90-1200	100-1280	100-1200	120-1280	
HIT-CT 1	17	-29/07.14	11/0390	EAD 330087-00-0601			h_{ef}		<800		<1000		<1300				
							l_e		≥ 100		≥ 100		≥ 100				

CE

...

Hilti AG
FL-9494 Schaan
Hilti Werke

1343-CPR-M 500-

ETA-
Notified body 1343

ETAG-
Seismic ...

www.hilti.com